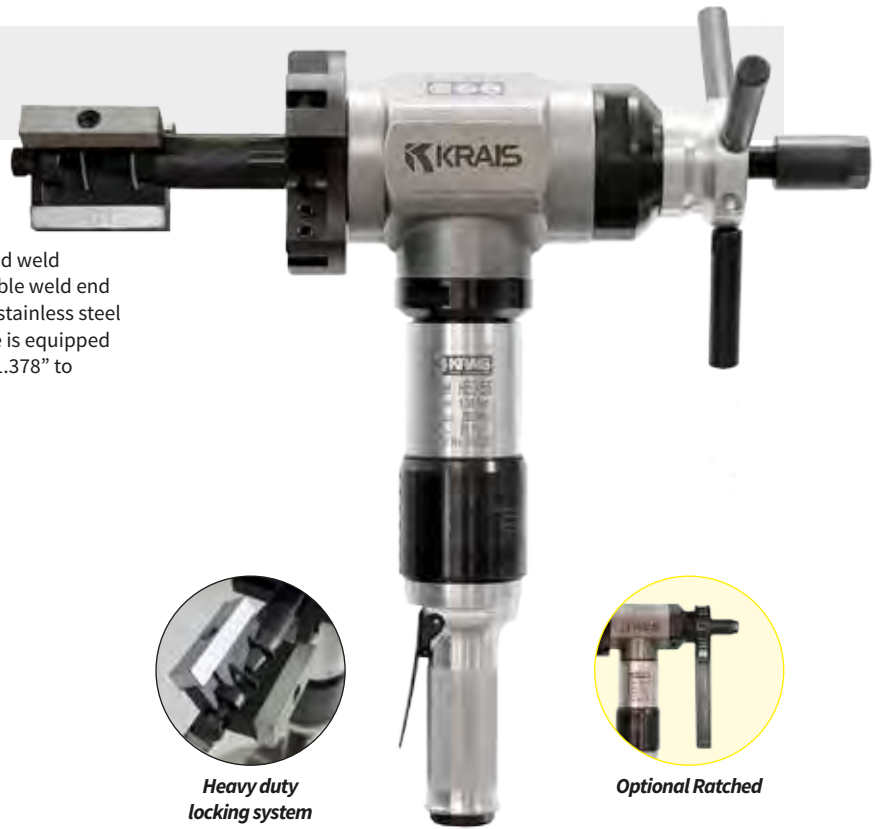


HyperMill 56



The HyperMill series pneumatic tube facing, bevelling and weld removal machines. The HyperMill is a rugged, fast, portable weld end preparation lathe for various tubes and pipes, including stainless steel and other high chromium materials. A standard machine is equipped with a locking system to cover sizes of 35 to 128 mm ID (1.378" to 5.039") with a 135 mm cutter head.



Heavy duty locking system



Optional Ratched

	STANDARD HEAD	APPLICATION RANGE	STD. LOCKING RANGE	FREE SPEED	TORQUE	FEED STROKE
HyperMill 55	135 mm	20 – 128 mm	30 – 128 mm	55 Rpm	280 Nm	40 mm
	5,3"	0,866 – 5,039"	1,180 – 5,039"		210 Ft.Lbs	1,6"

Recommended for **Tube facing** ■ **Tube bevelling**

Air consumption:	55 CFM	1,3 m³/min	Body width:	3,22"	82 mm	Body height:	15"	385 mm	Body weight:	19 Lbs	9 kg
-------------------------	--------	------------	--------------------	-------	-------	---------------------	-----	--------	---------------------	--------	------

HYPERMILL 56E

HyperMill 56E is electric version of HyperMill 55. The machine can cover the same pipe sizes and comes with the same cutting head. The electric motor made by Makita with 3 stage planetary gear box made by KRAIS has variable speed control and produce enormous torque. Is interchangeable with pneumatic drive and can be purchased separately at any time.

Free Speed 58 RPM
 Power 1,3 Hp
 Torque 720 Nm (530 Ft.Lbs)
 Feed Stroke 40 mm (1,6")

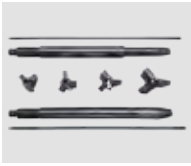


SAV-500 SPEED ADJUSTMENT VALVE



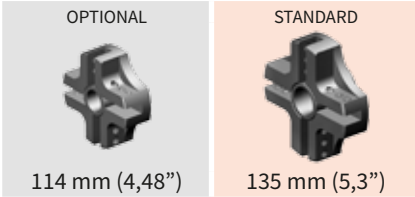
Perfect solution for all our bevelling machines for adjusting cutting speed to suit to the machined tube diameter.

AVAILABLE SHAFTS

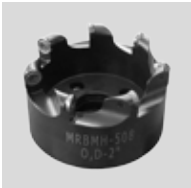


SHAFTS 30/25/20
Redesigned heavy duty locking system. Shafts and jaws are longer and wider to ensure maximum clamping force. The jaws are self-align.

UNIVERSAL CUTTER HEADS



OPTIONAL SPECIALIZED CUTTER HEADS



MMRBMH Membrane removal heads and overlay removal heads efficiently remove material from between boiler tubes.
TABLE PAGE F-23

Other type tailor made cutter head available on request.

ADDITIONAL ACCESSORIES



SPEED REDUCER
Speed reducer can be used for seal and strength weld removal applications including duplex, super duplex and other hard to machine alloys.

LOCKING RANGES WITH STANDARD SHAFT30 JAWS

RANGE [MM]		RANGE [INCH]		JAWS	EXT	SPRING	
MIN	MAX	MIN	MAX			NR	QTY
30,0	34,0	1,181	1,339	NS-1		SP-29	1
34,0	39,0	1,339	1,535	NS-2		SP-29	1
39,0	44,0	1,535	1,732	NS-3		SP-30	2
44,0	49,0	1,732	1,929	NS-4		SP-30	2
49,0	54,0	1,929	2,126	NS-5		SP-30	2
54,0	59,0	2,126	2,323	NS-6		SP-30	2
59,0	64,0	2,323	2,520	NS-7		SP-30	2
64,0	69,0	2,520	2,717	NS-8		SP-30	2
66,0	71,0	2,598	2,795	NS-5	NS-10	SP-30	2
71,0	76,0	2,795	2,992	NS-6	NS-10	SP-30	2
76,0	81,0	2,992	3,189	NS-7	NS-10	SP-30	2
81,0	86,0	3,189	3,386	NS-8	NS-10	SP-30	2
86,0	91,0	3,386	3,583	NS-5	NS-20	SP-30	2
91,0	96,0	3,583	3,780	NS-6	NS-20	SP-30	2
96,0	101,0	3,780	3,976	NS-7	NS-20	SP-30	2
101,0	106,0	3,976	4,173	NS-8	NS-20	SP-30	2
106,0	111,0	4,173	4,370	NS-5	NS-30	SP-30	2
111,0	116,0	4,370	4,567	NS-6	NS-30	SP-30	2
116,0	121,0	4,567	4,764	NS-7	NS-30	SP-30	2
121,0	126,0	4,764	4,961	NS-8	NS-30	SP-30	2

LOCKING RANGES WITH OPTIONAL SHAFT30 JAWS

RANGE [MM]		RANGE [INCH]		JAWS	EXT	SPRING	
MIN	MAX	MIN	MAX			NR	QTY
126,0	131,0	4,961	5,157	NS-5	NS-40	SP-30	2
131,0	136,0	5,157	5,354	NS-6	NS-40	SP-30	2
136,0	141,0	5,354	5,551	NS-7	NS-40	SP-30	2
141,0	146,0	5,551	5,748	NS-8	NS-40	SP-30	2
146,0	151,0	5,748	5,945	NS-5	NS-50	SP-30	2
151,0	156,0	5,945	6,142	NS-6	NS-50	SP-30	2
156,0	161,0	6,142	6,339	NS-7	NS-50	SP-30	2
161,0	166,0	6,339	6,535	NS-8	NS-50	SP-30	2

LOCKING RANGES WITH OPTIONAL SHAFT25 JAWS

RANGE [MM]		RANGE [INCH]		JAWS	EXT	SPRING	
MIN	MAX	MIN	MAX			NR	QTY
25,0	30,0	0,984	1,181	NS-1		SP-24	1
30,0	35,0	1,181	1,378	NS-2		SP-24	1
35,0	40,0	1,378	1,575	NS-3		SP-25	2
40,0	45,0	1,575	1,772	NS-4		SP-25	2
45,0	50,0	1,772	1,969	NS-5		SP-25	2
50,0	55,0	1,969	2,165	NS-6		SP-25	2
55,0	60,0	2,165	2,362	NS-7		SP-25	2
60,0	65,0	2,362	2,559	NS-8		SP-25	2
62,0	67,0	2,441	2,638	NS-5	NS-10	SP-25	2
67,0	72,0	2,638	2,835	NS-6	NS-10	SP-25	2
72,0	77,0	2,835	3,031	NS-7	NS-10	SP-25	2
77,0	82,0	3,031	3,228	NS-8	NS-10	SP-25	2
82,0	87,0	3,228	3,425	NS-5	NS-20	SP-25	2
87,0	92,0	3,425	3,622	NS-6	NS-20	SP-25	2
92,0	97,0	3,622	3,819	NS-7	NS-20	SP-25	2
97,0	102,0	3,819	4,016	NS-8	NS-20	SP-25	2

LOCKING RANGES WITH OPTIONAL SHAFT20 JAWS

RANGE [MM]		RANGE [INCH]		JAWS	EXT	SPRING	
MIN	MAX	MIN	MAX			NR	QTY
20,0	24,0	0,787	0,945	NS-0		SP-19	1
24,0	28,0	0,945	1,102	NS-1		SP-19	1
28,0	33,0	1,102	1,299	NS-2		SP-19	1
33,0	38,0	1,299	1,496	NS-3		SP-20	2