

MiniMill 300GFF

Ideal for gasket seat machining of any size of fin fan cooler. A standard machine is equipped with a cutter head and a special locking system to fit your application. The machine locks directly into the plug thread.



☞ Safely re-machine gasket surfaces in seconds.

	APPLICATION RANGE	STD. LOCKING RANGE	FREE SPEED	POWER	TORQUE	FEED STROKE
MiniMill 300GFF	1 1/8 – 2 1/8	Special fit to plug thread	300 Rpm	1,3 Hp	43 Nm	20 mm
	12 TPI				31,71 Ft.Lbs	0,787"

Recommended for FinFan cooler gasket seat facing

Air consumption:	55 CFM	1,3 m ³ /min	Body width:	2,32"	59 mm	Body height:	13,1"	335 mm	Body weight:	11 Lbs	5 kg
-------------------------	--------	-------------------------	--------------------	-------	-------	---------------------	-------	--------	---------------------	--------	------

LEVER FEED LM



A heavy duty feed handle ideal for heavy wall tube and pipe bevelling. Also well suited for strength and seal weld removal applications.

GASKET FINFAN SET



Supplied with 20 mm shaft, one set of jaws to suit plug thread diameter, pilot and gasket seat milling head. Plug size details must be provide by customer with order.

PNEUMATIC LOCK



This optional pneumatic lock decreases the cycle time between end preps by up to four times and is ideal for fabrication shops.

SPEED ADJUSTMENT VALVE



SAV-500 – perfect solution for all our bevelling machines for adjusting cutting speed to suit to the machined tube diameter.

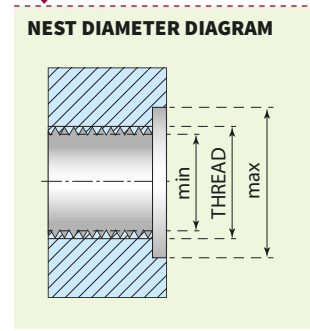


GASKET SEAT FACING HEAD NUMBERS

HEAD TYPE	PLUG SIZE			NEST DIAMETER				INSERT	NO. OF INSERTS
	[INCH]	[MM]	TPI	MIN [INCH]	MAX [INCH]	MIN [MM]	MAX [MM]		
FFGSMH-1125	1,125	28,58	12	0,940	1,496	24,00	38,00	CI 5x5	4
FFGSMH-1250	1,250	31,75	12	1,063	1,614	27,00	41,00	CI 5x5	4
FFGSMH-1350	1,375	34,93	12	1,220	1,772	31,00	45,00	CI 5x5	4
FFGSMH-1500	1,500	38,10	12	1,339	1,890	34,00	48,00	CI 5x5	4
FFGSMH-1625	1,625	41,27	12	1,457	2,008	37,00	51,00	CI 5x5	4
FFGSMH-1750	1,750	44,45	12	1,590	2,140	40,40	54,40	CI 5x5	4
FFGSMH-1875	1,875	47,62	12	1,720	2,270	43,60	57,60	CI 5x5	4

JAWS FOR GASKET SEAT FACING

JAWS SET NUMBER	PLUG SIZE		TPI	PILOT
	[INCH]	[MM]		
701MM #36-1-1/8-GFF	1,125	28,575	12	PGFF-1125
703MM #36-1-1/4-GFF	1,250	31,750	12	PGFF-1250
705MM #36-1-3/8-GFF	1,375	34,925	12	PGFF-1350
707MM #36-1-1/2-GFF	1,500	38,100	12	PGFF-1500
709MM #36-1-5/8-GFF	1,625	41,275	12	PGFF-1625
711MM #36-1-3/4-GFF	1,750	44,450	12	PGFF-1750
713MM #36-1-7/8-GFF	1,875	47,625	12	PGFF-1875



* other sizes on request

If plug holes are damaged beyond repair, our MiniDrill 55 can be used to upsize them to the next size. Example - 1-1/8" to 1-3/8".

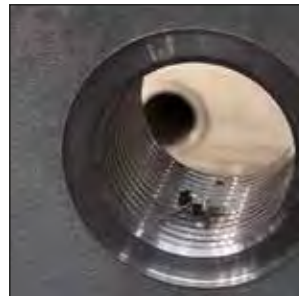
EXAMPLE TOOL APPLICATION



FinFan cooler before maintenance



Plug hole before re-machining the gasket seat



All types of water box materials can be machined with the carbide inserts of the MiniMill 300 GFF.



Custom machined jaws. Showing locked and up-locked position.