

FinMill

KRAIS FinMill is a air powered tool designed for removing fin from the outside diameter of a tube. The tool is based on the same quality drive and housing as our other PrepMill series tools. Thanks to heavy duty locking system The FinMill fin tube removal tool clamps reliably in the tube and offers chatter-free work at any position.

STANDARD SET UP



DOUBLE SIDE HEAD

Special shaped head, allows to remove left- and right-handed fins.



SHAFT25

Self-align, heavy duty locking system. Shafts and jaws are longer and wider to ensure maximum clamping force.



Reversible motor allow to work and remove left and right hand fins.

STANDARD WORKING RANGE		FEED STROKE	FREE SPEED	POWER	TORQUE		
APPLICATION RANGE (ID-OD)	LOCKING RANGE (ID)						
31,75 - 63,50 mm	25 - 122 mm	100 mm	100 Rpm	2,2 Hp	370 Nm		
1-1/4" - 2-1/2"	0,984 - 4,803"	4"			277 Ft.Lbs		
AIR USE		BODY WIDTH		BODY HEIGHT		BODY WEIGHT	
75 cfm	2,2 m ³ /min	2,59"	66 mm	14,5"	370 mm	19 Lbs	9 kg

HEAD NUMBERS

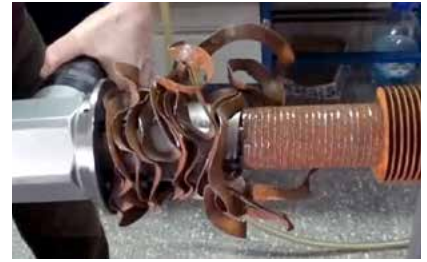
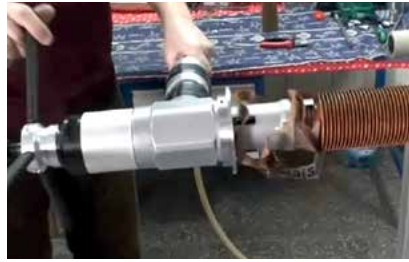
RANGE		HEAD
[INCH]	[MM]	
1-1/4	31,75	FMRH-317
1-1/2	38,10	FMRH-381
1-3/4	44,45	FMRH-444
2	50,80	FMRH-501
2-1/4	57,15	FMRH-571
2-1/2	63,50	FMRH-635

LOCKING RANGES WITH SHAFT25

RANGE [MM]		RANGE [INCH]		JAWS	EXT.	SPRING	
MIN	MAX	MIN	MAX			NUMBER	QTY.
25	30	0,984	1,181	NS-1	-	SP-24	1
30	35	1,181	1,378	NS-2	-	SP-24	1
35	40	1,378	1,575	NS-3	-	SP-25	2
40	45	1,575	1,772	NS-4	-	SP-25	2
45	50	1,772	1,969	NS-5	-	SP-25	2
50	55	1,969	2,165	NS-6	-	SP-25	2
55	60	2,165	2,362	NS-7	-	SP-25	2
60	65	2,362	2,559	NS-8	-	SP-25	2

FinMill

EXAMPLE TOOL APPLICATION



Removes 4.0" (101 mm) depth of fin from the tube OD in less than 2 minutes

OPTIONAL



STAR WHEEL

The most precise feed system. Used in many basic and demanding applications.

FINMILL E

FinMill E is electric version of FinMill. A standard machine cover the same pipe sizes and comes with the same cutting head. The electric motor made by Makita with 3 stage planetary gear box made by KRAIS has variable speed control and produce enormous torque. Is interchangeable with pneumatic drive and can be purchased separately at any time. FinMill E works only with right hand fins.

- Free Speed 115 RPM
- Power 750 W
- Torque 366 NM (280 Ft.Lbs)
- Feed Stroke 20 mm (0,787")

