

HTES-9000

PATENT PENDING

HTES-9000 is the most precise system from the pneumatically driven KRAIS tube rolling machines. The machine has an integrated strain gauge sensor controlled by an electric torque control transducer. Thanks to modern solutions, HTES-9000 is measuring torque directly from the driven spindle with superb precision. For the highest accuracy and repeatability, every machine is carefully calibrated with certified Electronic Torque Tester.

HTES-9000 is the first choice expansion tool for all who need to roll tubes with quality above industry-accepted standards offered by regular pneumatic tube expanding machines.

TES-9000 system is resistant to air pressure and volume fluctuations - expansion is precise regardless of unstable air supply as long as the motor is still able to generate enough power.

The system monitors torque throughout every expansion cycle, constantly provides the most precise wall reductions for every expanded tube. The system rolls to the targeted wall reduction each time, eliminating a lot of wasteful re-rolling.



H50 AND H60 SEMI-AUTOMATIC MODE

After pushing the H50/H60 trigger, the machine starts and execute just one, complete expanding cycle and will stop till the next startup. The semi-automatic mode can be enabled on the HTES-9000 control panel.

MAIN HTES-9000 FEATURES

- ▶ Pneumatic drives with built-in strain gauge sensor and 12V torque control transducer assure the highest accuracy of measurement
- ▶ Easy, user-friendly interface on a 7" touch screen.
- ▶ Supported languages: English, Korean, German, Spanish, Portuguese, Chinese and Polish.
- ▶ USB flash drive available to dump expanding log files (48 MB of internal storage space for the log files)
- ▶ CE compliant, in full accordance with RoHS compliance.

BASIC PARAMETERS

- For tubes: ½" – 1"
- Control unit weight: 8,5 kg
- Dimensions: 350 x 260 x 260 mm

POWER SUPPLY BOX:

- 230/110V

POWER SUPPLY MOTOR:

- 12V (via box)

AIR SUPPLY MOTOR:

- 6,2 bar, 1300 l/min
- 90 Psi, 55 cfm



FLEXHOLDER

To work with HTES-9000 controllers we recommend arm FlexHolder. This connection allows you to create a mobile workstation with an above average performance!



TES-3000

H50/H60 DRIVES

HTES-9000 rolling system uses drives based on our well-known K50 and K60 tube rolling motors. We replace the mechanical clutch, instead of which we control torque electronically. The handling of new motors is almost identical to using regular K50/K60.



H50 SERIES

H60 SERIES

H50/H60 are tube rolling motors with a fully automatic reverse system. The machines automatically:

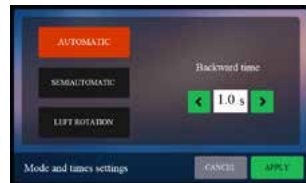
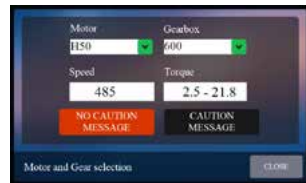
- startup rotating in the forward direction;
- reverse the revolution to the left once determine the setup torque;
- thanks to the adjustable delay timer, the machine automatically runs in a forwarding direction after a defined period from the end of a previous expansion.

Automatic tube expander lubrication "L" is available optionally.

New motors options are coming soon .

	TUBE OD		FREE SPEED	MIN TORQUE		MAX TORQUE		WEIGHT		LENGTH		AIR USE		ELECTRIC CONTROL	CHUCKS	
	[INCH]	[MM]	[RPM]	[FT.LBS]	[NM]	[FT.LBS]	[NM]	[LBS]	[KG]	[INCH]	[MM]	[CFM]	[L/MIN]		STD.	OPT.
H50-1250	3/4"	19	1250	1,17	1,58	9,0	12,20	18	8,2	19,6	500	60	1700	12V	3/8"	1/2"
H50-600	1"	25,4	485	1,84	2,49	16,1	21,81	18	8,2	19,6	500	60	1700	12V	3/8"	1/2"
H50-400	1 1/4"	31,7	400	3,69	5,00	26,6	36,00	18	8,2	19,6	500	60	1700	12V	3/8"	1/2"
H60-1200	1"	25,4	1200	3,80	5,15	18,5	25,00	27	12,25	20	510	70	2000	12V	3/8, 1/2	-
H60-900	1-1/2"	38,1	756	4,72	6,40	30,7	41,60	27	12,25	20	510	70	2000	12V	3/8, 1/2	-

The capacity, speed and torque of the machine depend on the work environment. Due to continuous work on improving the machine, all parameters are subject to change.



HTES-9000 SOFTWARE

- 】 The system has a friendly interface and a large touch screen. The primary function is to configure motor types with predefined values and to set up required expanding parameters.
- 】 The Torque Wizard helps to calculate torque settings based on % wall reduction, feed angle, mandrel taper, tube diameter, tube yield (ultimate tensile strength), wall thickness (gauge) and expansion length.
- 】 HTES-9000 software offers two operating modes: SEMIAUTO - single expansion with auto reverse, AUTO - expansions with auto reverse in a loop, until operator stops.
- 】 Other features are expandings counter, colour status lamps, metric and imperial units available. Software is translated into many languages.

BALANCER

Another optional addition to work with HTES-9000 controllers is a whole range of balancers. Easy way to build your workstation.

