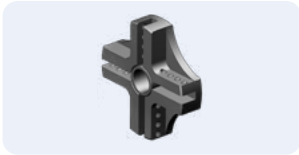


PipeMill

PipeMill is a pneumatic powered tube facing, bevelling and weld removal machine. The PipeMill is a rugged, fast and powerful weld end preparation lathe for various pipes including stainless steel and other exotic alloys. A standard machine is equipped with a locking system to cover sizes of 50,8 to 172 mm ID (2.000" to 6.800") with a 250 mm cutting head.

STANDARD SET UP



250 MM (9,8")

Cutter head special for the largest machines. Very rigid. Designed to fasten the wide range of cutting inserts.



STANDARD WORKING RANGE				OPTIONAL WORKING RANGE			
APPLICATION RANGE		LOCKING RANGE		APPLICATION RANGE		LOCKING RANGE	
50 – 279 mm		50 – 319 mm		50 – 319 mm		50 – 319 mm	
1,968 – 10,984"		1,968 – 12,559"		1,968 – 12,559"		1,968 – 12,559"	
FEED STROKE		POWER		FREE SPEED		TORQUE	
50 mm	1,968"	1,3 hp		Depends on gear			
AIR USE		BODY WIDTH		BODY HEIGHT		BODY WEIGHT	
70 cfm	2,2 m ³ /min	5,7"	145 mm	21,5"	550 mm	52,9 Lbs	24 kg

LOCKING RANGES WITH STANDARD JAWS

JAWS: SM-42

RANGE [MM]		RANGE [INCH]		EXTENSIONS		
MIN	MAX	MIN	MAX	A	B	C
50,0	65,0	1,969	2,559			
65,0	80,0	2,559	3,150	ML-42-A-75		
80,0	95,0	3,150	3,740	ML-42-A-150		
95,0	110,0	3,740	4,331	ML-42-A-225		
110,0	125,0	4,331	4,921	ML-42-A-300		
125,0	140,0	4,921	5,512	ML-42-A-375		
140,0	155,0	5,512	6,102			SML-42-C
155,0	170,0	6,102	6,693	ML-42-A-75		SML-42-C
170,0	184,5	6,693	7,264	ML-42-A-150		SML-42-C
184,5	199,0	7,264	7,835	ML-42-A-225		SML-42-C
199,0	214,0	7,835	8,425	ML-42-A-300		SML-42-C
214,0	229,0	8,425	9,016	ML-42-A-375		SML-42-C
229,0	244,5	9,016	9,626		ML-42-B	SML-42-C
244,5	259,5	9,626	10,217	ML-42-A-75	ML-42-B	SML-42-C
259,5	274,0	10,217	10,787	ML-42-A-150	ML-42-B	SML-42-C
274,0	289,0	10,787	11,378	ML-42-A-225	ML-42-B	SML-42-C
289,0	304,0	11,378	11,969	ML-42-A-300	ML-42-B	SML-42-C
304,0	319,0	11,969	12,559	ML-42-A-375	ML-42-B	SML-42-C






AVAILABLE GEARBOX CONFIGURATIONS

This tool comes with one chosen gearbox as a standard. Torque/speed depends on gear configuration:

GEARBOX 15	15 RPM	2544 Nm	1908 Ft.Lbs
GEARBOX 20	20 RPM	1883 Nm	1415 Ft.Lbs
GEARBOX 28	28 RPM	1290 Nm	969 Ft.Lbs
GEARBOX 37	37 RPM	971 Nm	730 Ft.Lbs

PipeMill

AVAILABLE HOLDERS

Facing	Inside bevelling and boring	Outside bevelling	J-Prep	Compound bevelling
				
F-45-90 BIT: 2CDI	F-CB-25+2-90 (ADJUSTABLE LENGTH FACING: HOLDER FOR THE LAND) BIT: XXXXXXX	IB-45-37 IB-45-10 BIT: 2CDI	OB-45-45 OB-45-37 OB-45-30 OB-45-10 BIT: 2CDI	JP-45-45 JP-45-37 JP-45-30 BIT: 2CDJ-5
				CB-1037 (OTHERS ON REQUEST) BIT: CB-45

OPTIONAL HEAD



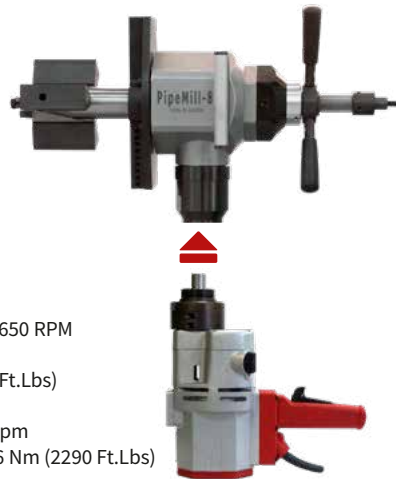
290 MM (11,4")
Biggest head for KRAIS Mini&HyperMill tools. Very rigid. Designed to fasten the wide range of cutting inserts.

PIPEMILL-E – ELECTRIC VERSION

PipeMill-E is electric version of PipeMill. The machine can cover the same pipe sizes and comes with the same cutting head. The electric motor with 4 speed mechanical gear box has also variable speed control and produce enormous torque on the cutter blade. Is interchangeable with pneumatic drive and can be purchased separately at any time. Take 5 min to replace from pneumatic to electric.

DUDE-2000-4-SPEED

Motor free speed..... 120-210-380-650 RPM
 Motor power..... 2000 W
 Motor torque (on the 1st gear)..... 240 Nm (180 Ft.Lbs)
 Machine feed stroke 40 mm (1,6")
 Cutter head speed 10-17-30-50 rpm
 Max torque on cutter blade (on the 1st gear).... 3096 Nm (2290 Ft.Lbs)



EXAMPLE TOOL APPLICATION

