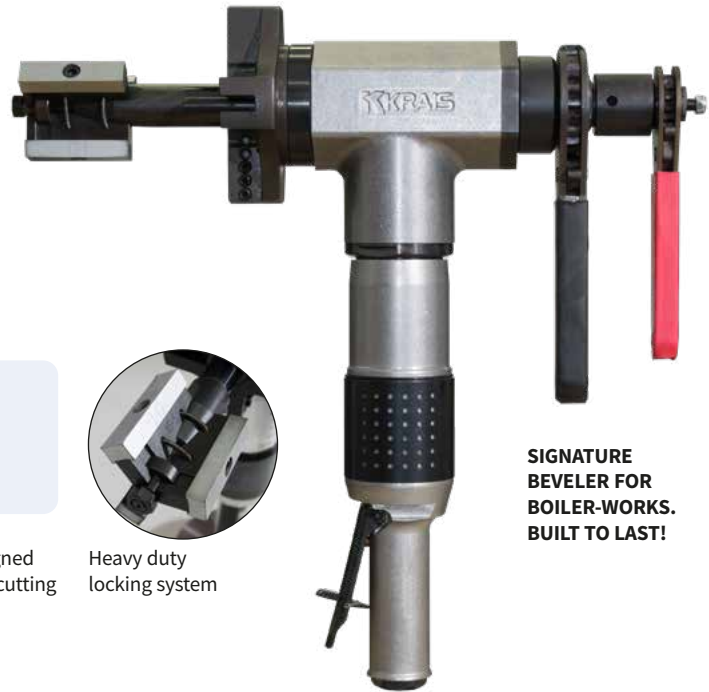


PrepMill

The PrepMill series pneumatic tube facing, bevelling and weld removal machine. The PrepMill is a rugged, fast, portable weld end preparation lathe for various tubes including stainless steel and other high chromium alloys. Machine is constructed on two opposite set up taper roller bearings that makes the machine extremely stable and very rigid and compact. A standard machine is equipped to cover 25 to 122 mm ID (1" to 4,8") with a 116 mm cutter head.

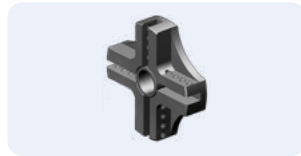


**SIGNATURE
BEVELER FOR
BOILER-WORKS.
BUILT TO LAST!**

STANDARD SET UP



SHAFT25
Self-align, heavy duty locking system. Shafts and jaws are longer and wider to ensure maximum clamping force.



116 MM (4,56")
The large cutter head, designed to fasten the wide range of cutting inserts.



Heavy duty locking system

| STANDARD WORKING RANGE | | | | TOTAL WORKING RANGE | | | |
|------------------------|-------------------------|---------------|-------|---------------------|--------|---------------|------------|
| APPLICATION RANGE | | LOCKING RANGE | | APPLICATION RANGE | | LOCKING RANGE | |
| 25 – 127 mm | | 25 – 122 mm | | 20 – 127 mm | | 20 – 122 mm | |
| 1 – 5" | | 1,0 – 4,8" | | 0,787 – 5" | | 0,787 – 4,8" | |
| FEED STROKE | | POWER | | FREE SPEED | | TORQUE | |
| 25 mm | 1" | 1,3 hp | | 120 rpm | | 140 Nm | 105 Ft.lbs |
| 55 cfm | 1,3 m ³ /min | 2,59" | 66 mm | 14,5" | 370 mm | 20,5 Lbs | 9,5 kg |

PREPMILL-E

PrepMill-E is electric version of PrepMill. A standard machine can cover the same pipe sizes and comes with the same cutting head. The electric motor made by Makita with 3 stage planetary gear box made by KRAIS has variable speed control and produce enormous torque. Is interchangeable with pneumatic drive and can be purchased separately at any time.

Free Speed 115 RPM
 Power..... 750 W
 Torque 368 Nm (280 Ft.Lbs)
 Feed Stroke 25 mm (1")



EXAMPLE TOOL APPLICATION



PrepMill with its 66 mm (2-5/8) width body perfectly fit into limited access areas such as Water wall panels. Easy to clamp and feed with our heavy duty ratchet or star wheel feed.

PrepMill

OPTIONAL HEADS



66 MM (2,59")
The smallest cutter head, designed to fasten the wide range of cutting inserts.



88 MM (3,46")
The popular, medium cutter head, designed to fasten the wide range of cutting inserts.



OBPM
Head for outside bevelling of tubes and pipes. Available in wide range of diameters and beveling angles.
→ TABLE PAGE 110



PRRMBH
Head for membrane and overlay removal. Efficiently remove material between boiler tubes.
→ TABLE PAGE 110



STWRPM
Head dedicated for strength weld removal. Heads are easy to align and sized per tube diameter.
→ TABLE PAGE 111



TFPM
Tube facing milling head for tubes made of any type of material. Utilizes 6% cobalt inserts.
→ TABLE PAGE 111

OPT. SHAFT



SHAFT20
Self-align, heavy duty locking system. Shafts and jaws are longer and wider to ensure maximum clamping force.



FAST CLAMPING SYSTEM
System offers rapid tube to tube cycle time, increased productivity (up to 4x) with little operator fatigue. Ideal for large amount of end preps.

OTHER OPTIONAL ACCESSORIES



HEAD FLANGE
Adapter to use all MiniMill's special cutter heads (from size 1-1/2" and up).



SPEED REDUCER
Easy to use gearbox for 3x speed reduction. Increases the torque, enabling the machine to generate a thick chip whilst reducing the cutting time.



STAR WHEEL
The most precise feed system. Used in many basic and demanding applications.

PREPMILL LOCKING RANGES

WITH SHAFT25

| SHAFT | JAWS | EXT. | RANGE [MM] | | RANGE [INCH] | | SPRING | | |
|---------|-------|-------|------------|-----|--------------|-------|--------|-------|---|
| | | | MIN | MAX | MIN | MAX | NO. | QTY. | |
| SHAFT25 | NS-1 | - | 25 | 30 | 0,984 | 1,181 | SP-24 | 1 | |
| | NS-2 | - | 30 | 35 | 1,181 | 1,378 | SP-24 | 1 | |
| | NS-3 | - | 35 | 40 | 1,378 | 1,575 | SP-25 | 2 | |
| | NS-4 | - | 40 | 45 | 1,575 | 1,772 | SP-25 | 2 | |
| | NS-5 | - | 45 | 50 | 1,772 | 1,969 | SP-25 | 2 | |
| | NS-6 | - | 50 | 55 | 1,969 | 2,165 | SP-25 | 2 | |
| | NS-7 | - | 55 | 60 | 2,165 | 2,362 | SP-25 | 2 | |
| | NS-8 | - | 60 | 65 | 2,362 | 2,559 | SP-25 | 2 | |
| | NS-5 | NS-10 | | 62 | 67 | 2,441 | 2,638 | SP-25 | 2 |
| | NS-6 | NS-10 | | 67 | 72 | 2,638 | 2,835 | SP-25 | 2 |
| | NS-7 | NS-10 | | 72 | 77 | 2,835 | 3,031 | SP-25 | 2 |
| | NS-8 | NS-10 | | 77 | 82 | 3,031 | 3,228 | SP-25 | 2 |
| | NS-5 | NS-20 | | 82 | 87 | 3,228 | 3,425 | SP-25 | 2 |
| | NS-6 | NS-20 | | 87 | 92 | 3,425 | 3,622 | SP-25 | 2 |
| | NS-7 | NS-20 | | 92 | 97 | 3,622 | 3,819 | SP-25 | 2 |
| | NS-8 | NS-20 | | 97 | 102 | 3,819 | 4,016 | SP-25 | 2 |
| | NS-5 | NS-30 | | 102 | 107 | 4,016 | 4,213 | SP-25 | 2 |
| | NS-6 | NS-30 | | 107 | 112 | 4,213 | 4,409 | SP-25 | 2 |
| NS-7 | NS-30 | | 112 | 117 | 4,409 | 4,606 | SP-25 | 2 | |
| NS-8 | NS-30 | | 117 | 122 | 4,606 | 4,803 | SP-25 | 2 | |

WITH SHAFT20

| SHAFT | JAWS | EXT. | RANGE [MM] | | RANGE [INCH] | | SPRING | |
|---------|------|------|------------|-----|--------------|-------|--------|------|
| | | | MIN | MAX | MIN | MAX | NO. | QTY. |
| SHAFT20 | NS-0 | - | 20 | 24 | 0,787 | 0,945 | SP-19 | 1 |
| | NS-1 | - | 24 | 28 | 0,945 | 1,102 | SP-19 | 1 |

EXAMPLE TOOL APPLICATION

